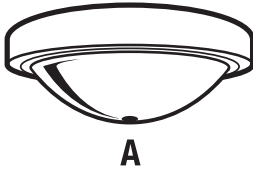


Blank-Up Canopy #60224

What's Inside

1 – 5" Polished Brass Canopy 7/16" Center Hole (A)



What's Needed

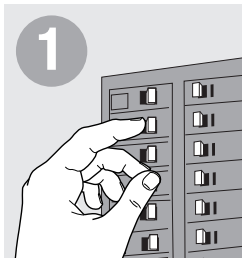
3/8 IP x 1/8 IP Reducer
 1/8 IP x 2 1/2" Nipple
 1/8 IP Cap Nut
 Wire Nuts
 Screwdriver
 Wire Insulation Stripper
 Pliers

What's Its Purpose

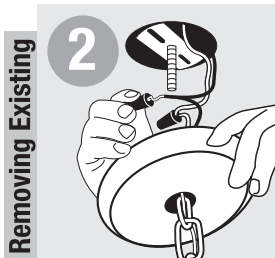
Decorative piece used to cover the outlet box after removal of existing fixture. Can also be used as base of table lamp.

Warning

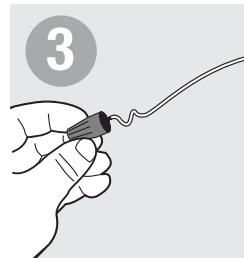
- Before beginning **TURN OFF POWER** to the light from the fuse or circuit breaker.
- Follow local electrical regulations or codes when installing and using this product.
- When installing fixture directly to outlet box, the outlet box must be capable of supporting 50 lbs. and be supported by the building structure.
- **CAUTION: RISK OF ELECTRIC SHOCK. RISK OF FIRE.**



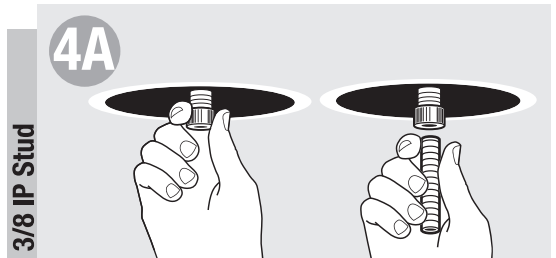
1
 Before beginning **TURN OFF POWER** to the light from fuse or circuit breaker



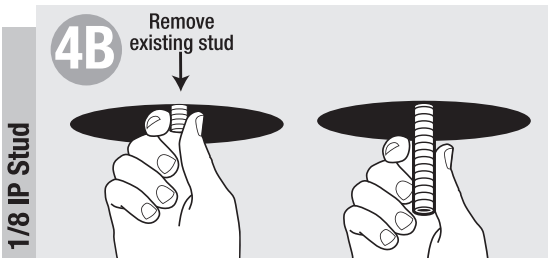
2
 Removing Existing
 Remove fixture from outlet box.



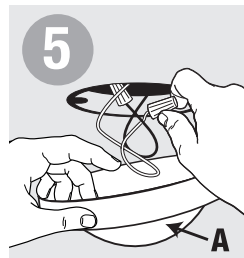
3
 Attach wire nuts to end of each conductor wire.



4A
 3/8 IP Stud
3/8 IP stud: Screw reducer onto stud. Tighten by hand. Screw nipple into reducer.



4B
 Remove existing stud
 1/8 IP Stud
1/8 IP stud: Replace existing stud with nipple.



5
 Cover with blank-up canopy (A). Make sure all wires are carefully placed inside of box and blank-up.



6
 If needed, adjust nipple so canopy rests against ceiling after installation. Secure blank-up canopy with cap nut.